

BUILD *the* VILLAGE

Caterham Seven



www.priz.co.uk/build

Designed by Lotus founder Colin Chapman, the first incarnation of the Seven (the S1) was launched at the 1957 Earls Court Motor Show. The car was sold as a kit in order to avoid Purchase Tax and became hugely popular.

In 1960, the S2 was launched and in 1966, Patrick McGoochan chose it as the car for Number 6 in *The Prisoner*. This greatly helped the image of the S2 which already was selling better than the S1. However, it was also around this time that Lotus were considering to discontinue the car. One of the most supportive dealers of the car, Caterham, decided to continue their support of the car and became the sole distributor, taking over marketing and promotion — the Caterham Seven was born.

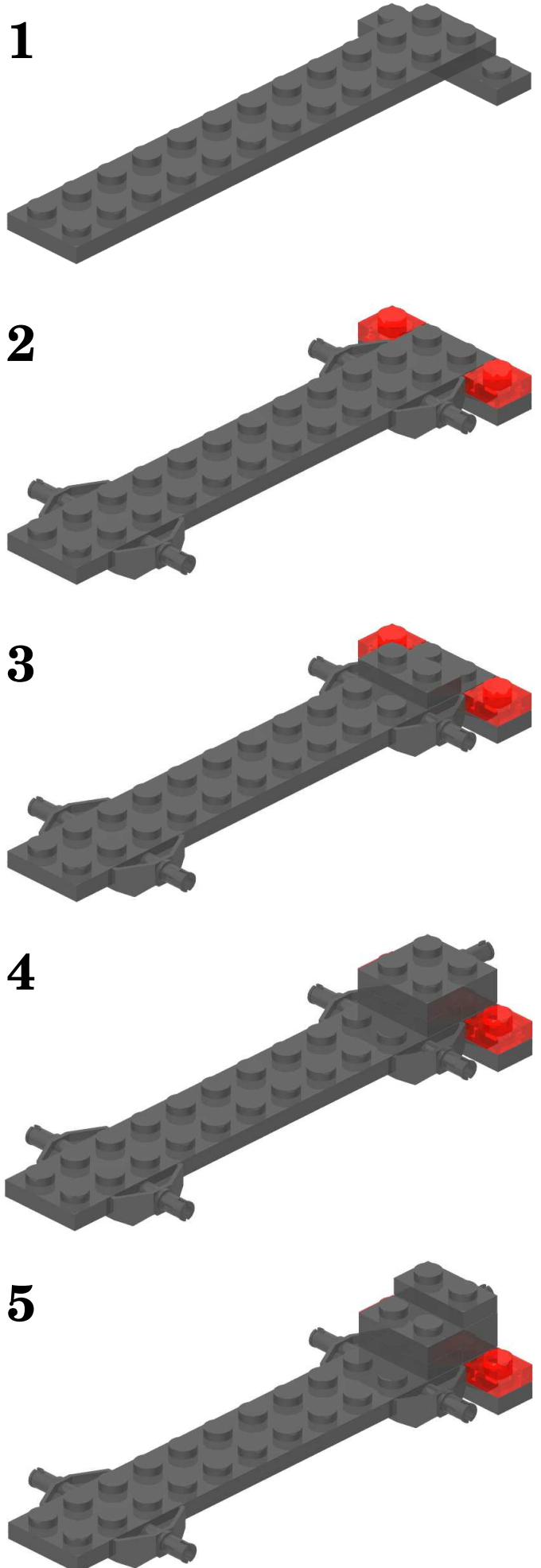
Caterham continue to manufacture and sell the Seven to this day.

The Caterham Seven *Prisoner* Edition comes with green bodywork with yellow nose cone, red leather interior and an embossed Patrick McGoochan autograph.

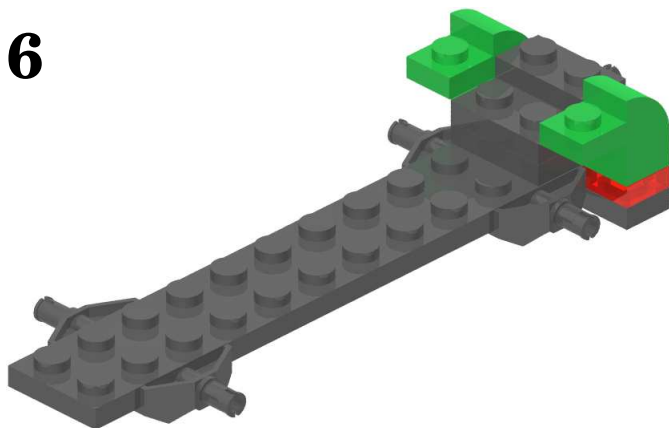
In building a LEGO “Seven”, the green curved bricks and panels can be difficult to obtain. In this case you may build the car in any colours you wish to create a truly customised “Seven”.

LEGO® Caterham Seven design, instructions, text and images are copyright David Mackenzie and are not to be reproduced without permission. LEGO is a registered trademark of The LEGO Company. “The Prisoner” is copyright Granada Ventures.

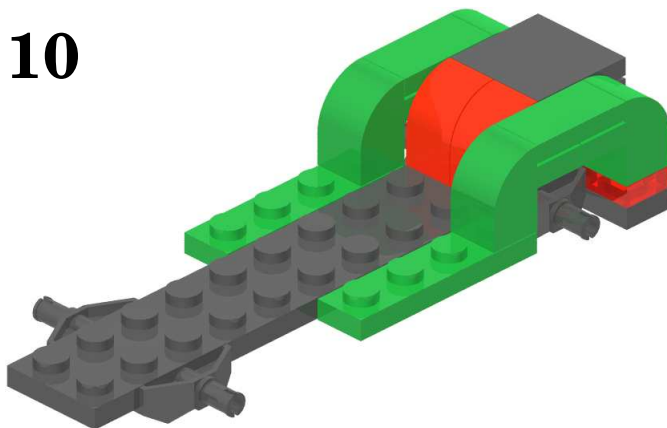
PDF generated by PrimoPDF: <http://www.primopdf.com/>



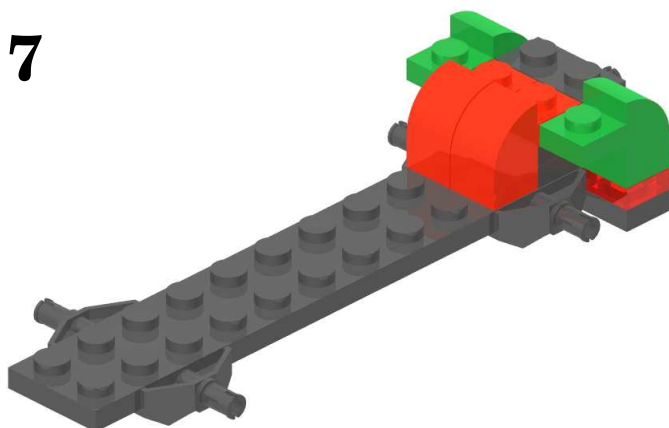
6



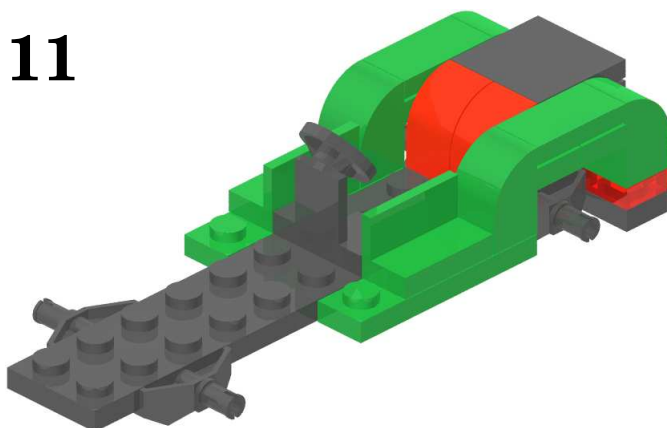
10



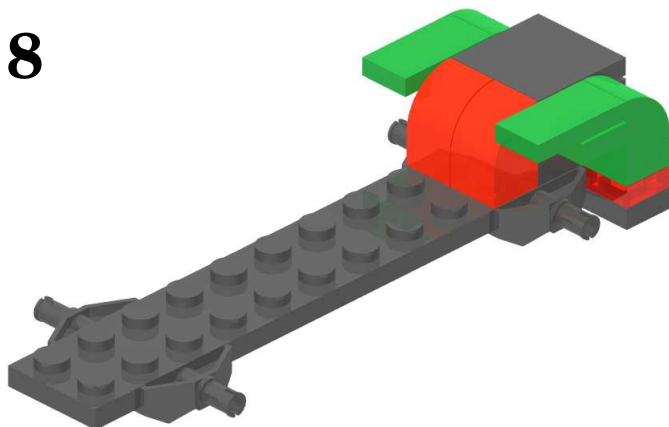
7



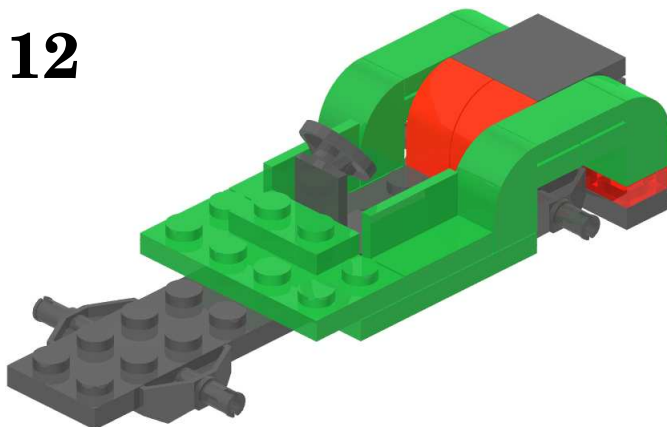
11



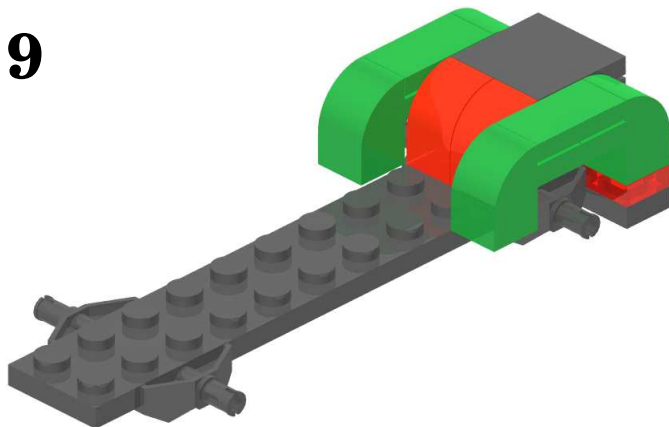
8



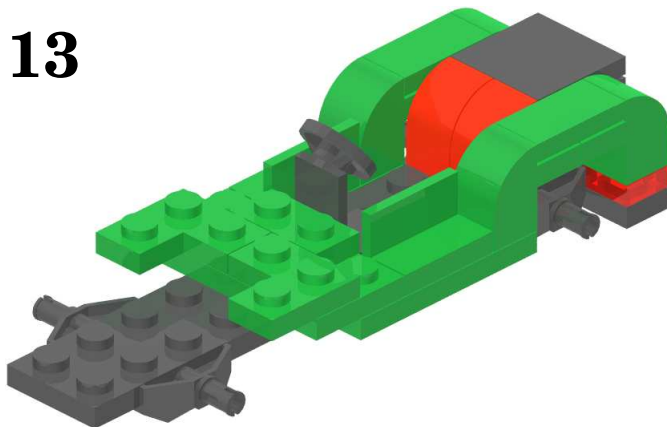
12



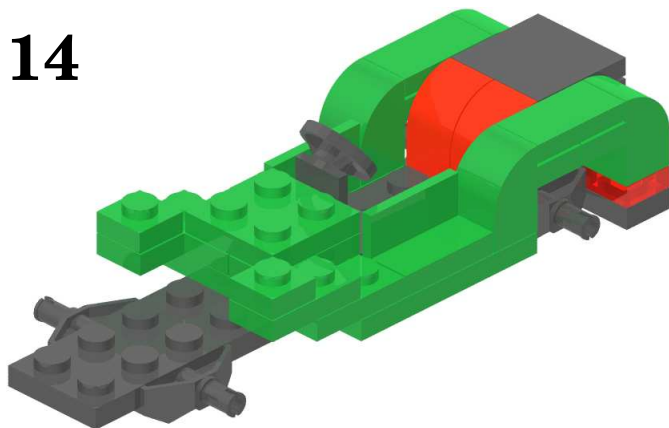
9



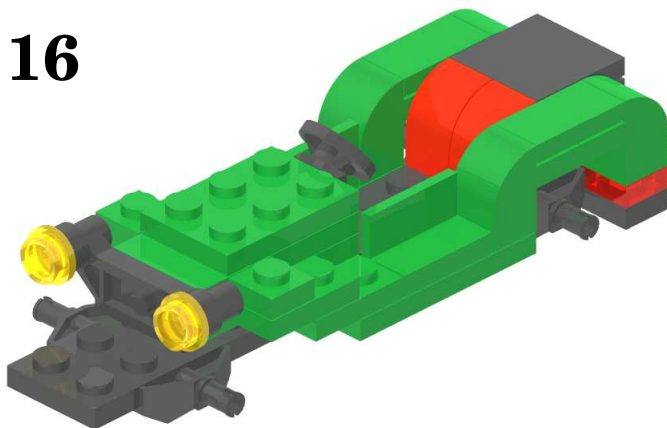
13



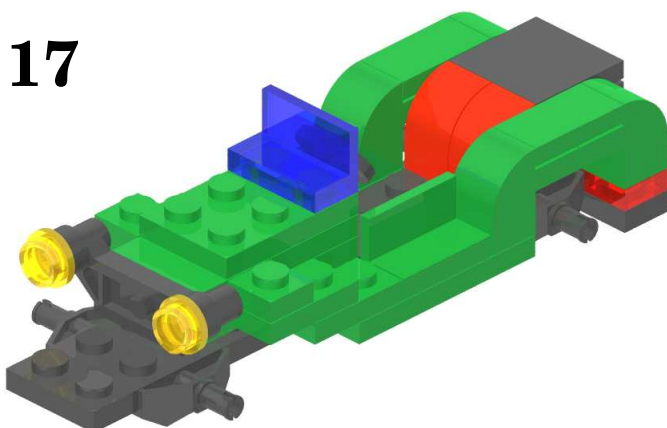
14



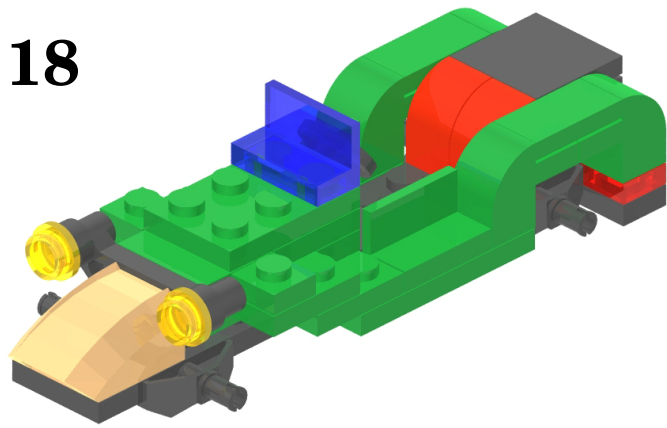
16



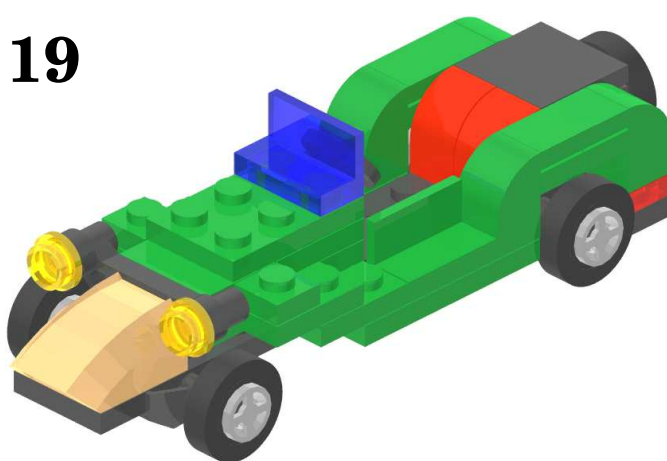
17



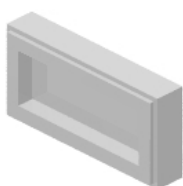
18



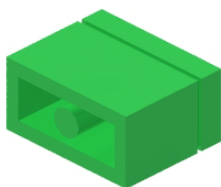
19



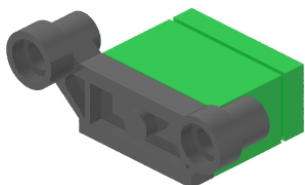
1



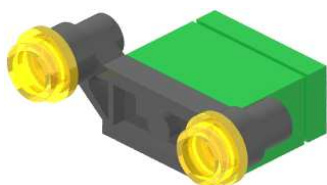
2



3



4



15

